

Guns – Knives – Safes: Remington 11-87 semi auto 12 ga w/ cantilever mt. 3X9 Burris scope, rifled slug barrel – Marlin Golden 39A Mountie 22 cal lever action tube feed – Two Marlin “original Golden” 39AS 22 cal lever action w/ 3X9 scope – Remington 870 Express 28 ga pump – Savage 24J-DL over/under 20 ga 3” 22 cal – Remington 870 12 ga w/ scope – NE Firearms 20 ga single – Thompson Center 50 cal muzzle loader w/ Burris scope – Ruger 77/22 22 Hornet bolt action w/ scope – Franchi 720 20 ga semi auto w/ hard case – 20 ga Amo 38 cal & 22 cal ammo – Approx. half dozen hand guns, Beretta 7.65 new puma – Springfield Armory .45 cal – Taurus .357 mag – Taurus .38 special – Beretta .32 Tomcat - one stack on and one Sentinel 14 gun safes – Diebold fire-proof combo safe, approx. 6’high X 4’wide X 2’deep – several show cases

Approx. 400 knives including: Several sets of Case 5 blade knives – two authorized dealer Bowie knives in cases – two marbles hatchets – Case knives w/ sheaths – dozens of Case pocket knives – several dozen Queen knives including: Mother of Pearl – Case knife sharpeners – Case knife model trucks – approx. dozen Bulldog pocket knives – pearl handle Case knives – several fishing rods and fishing tackle – misc. hunting clothes

Household – Collectibles: 3 O-gauge train sets – approx. 2 dozen precious moments – misc. craft items – 200+ pcs of new Tupperware – 10-drawer file cabinet – Zippo lighter – display case & lighters – RCA big screen TV

Tractors – 3 Pt. Equipment – Tools – Boat: New Holland TC40 tractor with 16LA loader/bucket 4WD, rops, one owner, low hours, very good - JD “M” tractor – Ford 8N tractor, both have been sitting – Woods 5’ 3 pt. brush hog – 3 pt. 2 bottom plow – 3 IH suitcase weights – 3 pt. blade – 3 pt boom pole – 17 HP JD GT262 lawn tractor – Lincoln 225 welder – 3 pt. disc – band saw – TroyBilt rear-tine tiller – rolls of cable – pneumatic impact – double shaft grinder – pipe vise – misc. hand tools – battery charger – gas cans – 10 sections of shelves – wrenches – sockets – Dewalt & Milwaukee hammer drills – step ladders – Mac stack mod. toolbox – 5K watt gas generator – Monark fishing boat with trailer, depth finder, Mercury 45 motor – Johnson 9.9 motor to sell separate

TERMS ON CHATTELS: Driver’s license or State ID required to register for bidder number. Cash, Check, Debit Card, Visa, or Master Card accepted. 4% buyer’s premium on all sales; 4% waived for cash or check. Information is believed to be accurate but not guaranteed.

Auctioneer/Realtor: Rudy W. Kiko, 330-540-2416
Auction By Order Of: Debra Armentrout



Auctioneer/Realtor®
RUDY W. KIKO
 330.540.2416
 rudykiko@kikocompany.com



Explore Your Options

AUCTION

LEADING THE INDUSTRY SINCE 1945

Friday – March 2, 2018 – 10:00 AM
Real Estate Sells At 12:00 PM

22+ Acres – Home – Sold In Two Parcels

“ARMENTROUT AUCTION”

Auction #1 – Three-Bedroom Home – Garage – Two-Car Detached Garage - Free Gas – Small Bank Barn – 1.6 Acres

Auction #2 – Adjacent to Auction #1 – 20.8 Acres Of Vacant-Wooded Land Portage Co. – Charlestown Twp. – SE Local Schools – Conveniently Located To SR 5, SR 44, I-76, & Turnpike – Etc.

Also Selling: Tractors – Firearms – 400+ Knives – Tools – Household – Etc. – Two Auction Ring Part Of The Day

Absolute auction, all sells to the highest bidders on location:

6192 ROCK SPRING RD., RAVENNA, OH 44266

Directions: Take SR 5 (Newton Falls Rd.) east of Rt. 44 in Ravenna approx. 3 miles to Rock Spring Rd. and north to auction.
 Watch for KIKO signs.



Information is believed to be accurate but not guaranteed.



330.455.9357 • kikoauctions.com



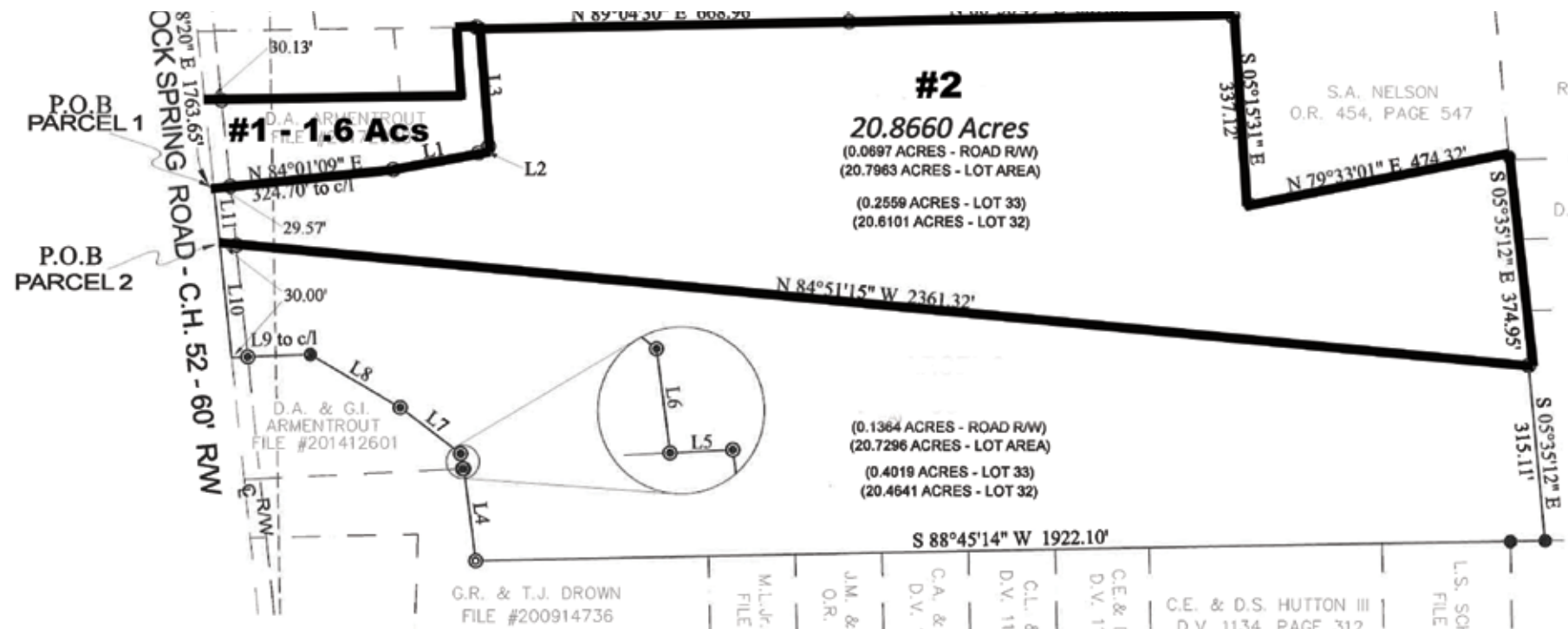
330.455.9357 • kikoauctions.com



Auction #1 – Fixer-upper home features mudroom entrance w/ access to basement, eat-in kitchen, living room, full bath and bedroom all on main level. Two more bedrooms up. Full divided basement, block foundation, laundry, also access to garage, boiler heat, electric and fuel oil back-up, free gas off well. 200 amp. elec. service. New shingles 4 yrs ago. 30 X 40 two-car detached garage w/ enclosed heated room in rear. Small bank barn & storage building in back. 1.6 acres

Auction #2 – Adjacent to #1. 20.8 acres of mostly wooded vacant land with creek. Great hunting/nature tract.

TERMS ON REAL ESTATE: 10% down auction day, balance due at closing. A 10% buyer's premium will be added to the highest bid to establish the purchase price, which goes to the seller. Any desired inspections must be made prior to bidding. All information contained herein was derived from sources believed to be correct. Information is believed to be accurate but not guaranteed.



LINE	BEARING	DISTANCE
L1	N 79°00'07" E	155.99'
L2	N 57°43'36" E	21.88'
L3	N 06°03'19" W	214.49'
L4	N 07°31'24" W	166.27'
L5	S 87°06'14" W	1.88'
L6	N 07°27'52" W	27.20'
L7	N 52°50'37" W	136.43'
L8	N 59°37'48" W	187.19'
L9	S 87°48'22" W	142.19'
L10	N 05°58'20" W	205.00'
L11	N 05°58'20" W	100.00'

